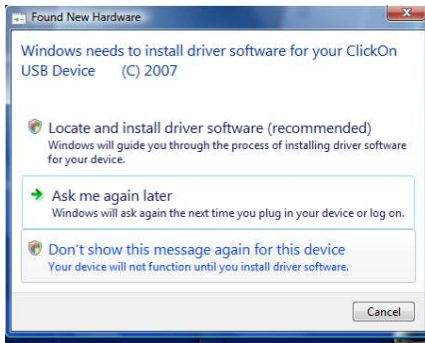


CLICKON BUS USB PC INTERFACE: USB DRIVER INSTALLATION

1. Windows VISTA

- 1.1. Install the latest release of CLBUS software
- 1.2. Plug the USB interface into the PC USB port



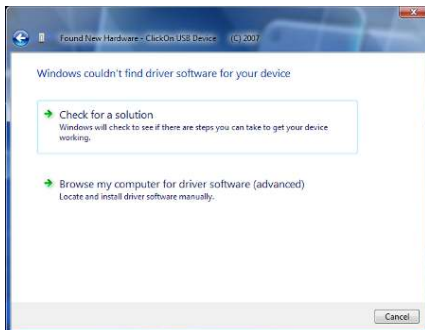
- 1.3. Select first option: **Locate and install driver software**



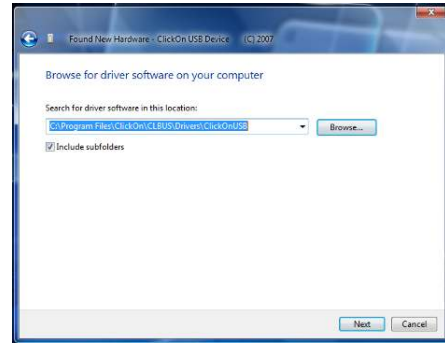
- 1.4. Select third option: **Don't search online**



- 1.5. Select second option: **I don't have the disc. Show me other options.**



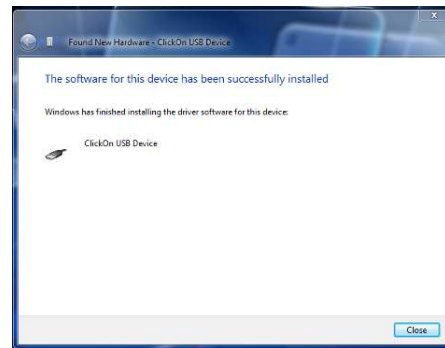
- 1.6. Select second option: **Browse my computer for driver software**



- 1.7. Browse to the location where the USB drivers are installed (default: C:\Program Files\ClickOn\CLBUS\Drivers\ClickOnUSB)
- 1.8. Click **Next**



- 1.9. Select second option: **Install this driver software anyway**
- 1.10. Wait for installation to complete



- 1.11. Click **Close**

- 1.12. Run the **CLBUS** software
- 1.13. In **Setup, Communication Port Setup** select the USB interface



- 1.14. A green ticked icon indicates that the USB interface is connected and ready.

CLICKON BUS USB PC INTERFACE: USB DRIVER INSTALLATION

2. Windows XP

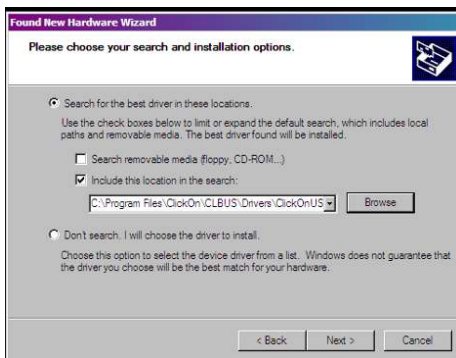
- 2.1. Install the latest release of CLBUS software
- 2.2. Plug the USB interface into the PC USB port



- 2.3. Select third option: **No, not this time.** Click **Next.**



- 2.4. Select second option: **Install from a list or specific location.** Click **Next.**



- 2.5. Select first option: **Search for the best driver.**
- 2.6. Uncheck **Search for removable media**
- 2.7. Check **Include this location in the search**
- 2.8. Browse to the location where the USB drivers are installed (default: C:\Program Files\ClickOn\CLBUS\Drivers\ClickOnUSB)
- 2.9. Click **Next.**



- 2.10. Click **Continue Anyway.**
- 2.11. Wait for installation to complete



- 2.12. Click **Finish**
- 2.13. Run the **CLBUS** software
- 2.14. In **Setup, Communication Port Setup** select the USB interface



- 2.15. A green ticked icon indicates that the USB interface is connected and ready.