

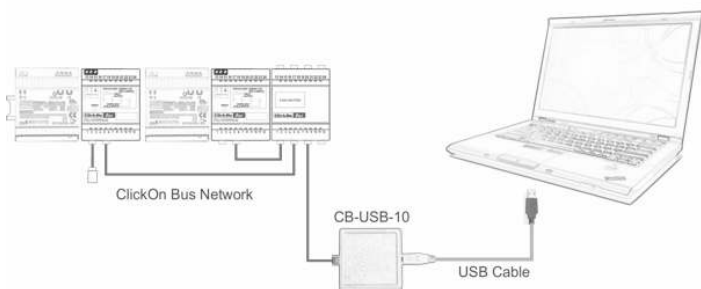
# ClickOn Bus USB Programming Interface

## CB-USB-10

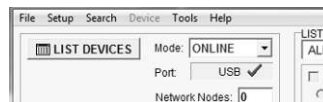
### Installation Instructions and User's Guide



#### Installation



- Install the latest release of CLBUS software
- Connect the USB side of the Interface to the computer via the supplied USB cable. Connect the other side (RJ45) to the Bus Network.
- Install the USB Drivers (see *Windows XP USB Driver Installation* or *Windows Vista USB Driver Installation*)
- In CLBUS software, open **Setup, Communication Port Setup** and select the **USB (ClickOn Driver)** option



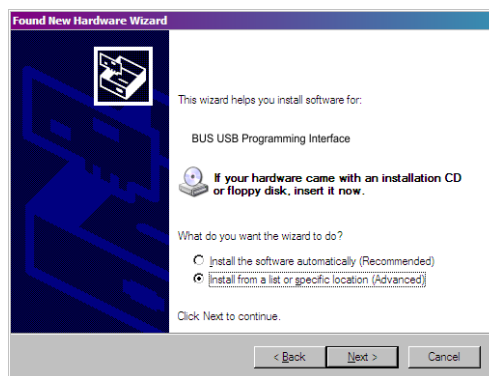
- A green ticked icon indicates that the USB interface is connected and ready.

#### Windows XP USB Driver Installation

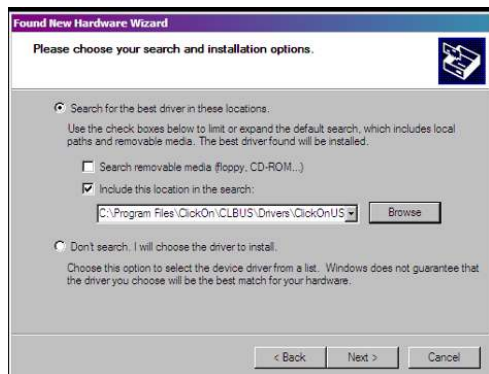
1. Ensure that the latest release of CLBUS software is installed
2. Plug the USB interface into the PC USB port



3. Select third option: **No, not this time.** Click **Next**.



4. Select second option: **Install from a list or specific location.** Click **Next**.



5. Select first option: **Search for the best driver.**
6. Uncheck **Search for removable media**
7. Check **Include this location in the search**
8. Browse to the location where the USB drivers are installed (default: C:\Program Files\ClickOn\CLBUS\Drivers\ClickOnUSB)
9. Click **Next**.



10. Click **Continue Anyway**.

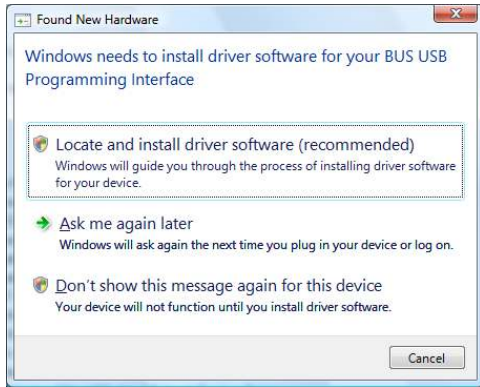
11. Wait for installation to complete



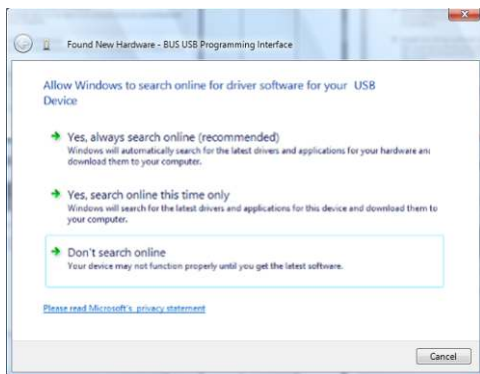
12. Click **Finish**

**Windows Vista USB Driver Installation**

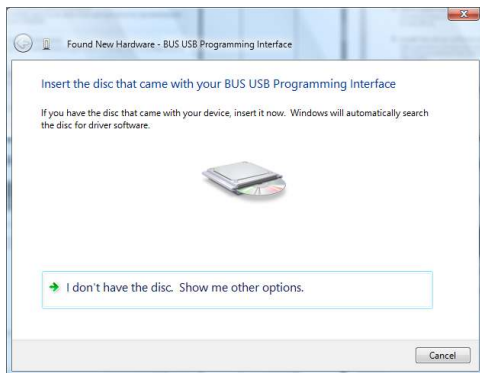
1. Ensure that the latest release of CLBUS software is installed
2. Plug the USB interface into the PC USB port



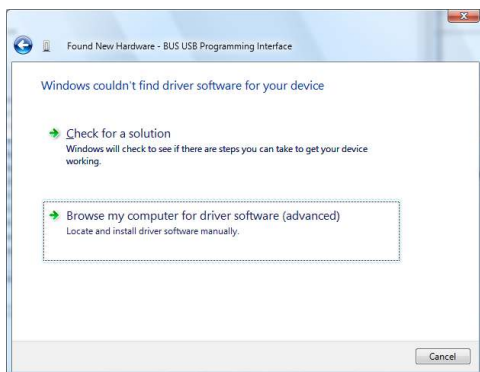
3. Select first option: **Locate and install driver software**



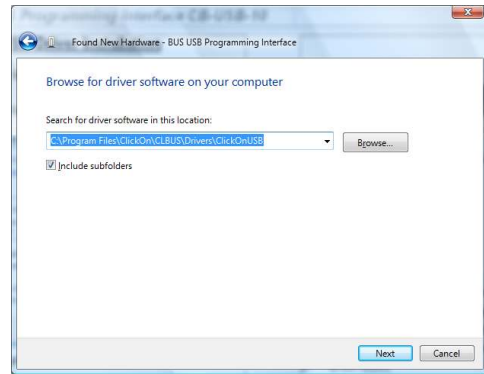
4. Select third option: **Don't search online**



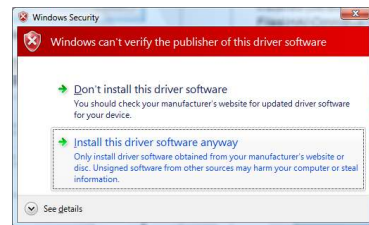
5. Select second option: **I don't have the disc. Show me other options.**



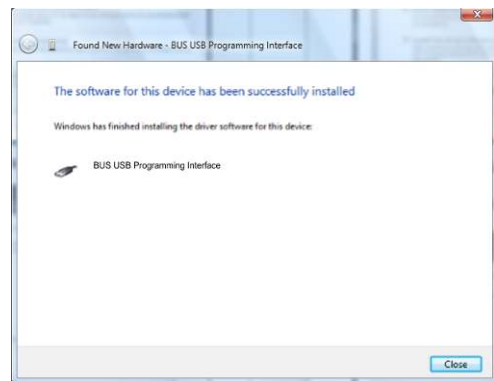
6. Select second option: **Browse my computer for driver software**



7. Browse to the location where the USB drivers are installed (default: C:\Program Files\ClickOn\CLBUS\Drivers\ClickOnUSB)
8. Click **Next**



9. Select second option: **Install this driver software anyway**
10. Wait for installation to complete



11. Click **Close**