



HOME AUTOMATION, INC.

Model 68A00-1



Network Digital Video Recorder (DVR) Quick Installation Guide

Document Number 68C00-1 Rev. A

January, 2008

About this Manual

This manual is provided to show how to operate the 68A00-1 Network Digital Video Recorder for system administrators and users. Users should read this manual carefully before installing this unit. This guide should be kept for future reference.

All information including the specifications in this manual is subject to change without any prior notice. The manufacturer does not imply or guarantee that any information included in this manual is correct for the purpose of the end user's application. The manufacturer shall not be responsible for any adverse consequences caused by the use of the information in this manual.

Safety Warnings

This product and/or user manuals include warnings and/or cautions that can affect the product, its performance, and the user. Users shall fully understand and comply with the warnings.

Warnings

- Open the cover at your own discretion. Doing so can cause system damage or electric shock. Contact a qualified technician or your dealer for repair of this product. Manufacturer is not responsible for any damage or injury sustained by opening and/or assembling/disassembling the unit.

- Electric shock or fire may result when foreign liquids or substances are introduced into the unit. If this occurs, discontinue use, power down the unit and contact your dealer immediately.

- This equipment is susceptible to electric surge damage. Use of a conditioned power supply is recommended.

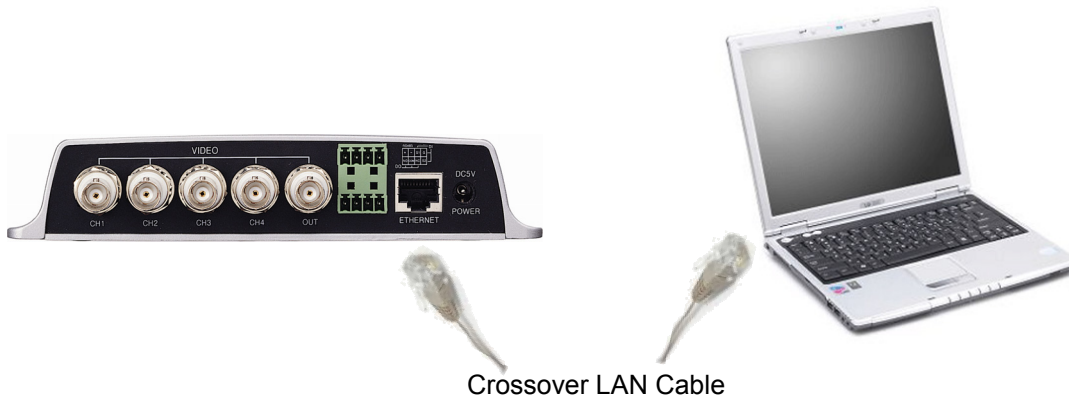
- Avoid installing the unit in locations where severe vibration, high humidity or direct sunlight exists.

- Do not place a heavy load on top of this unit.

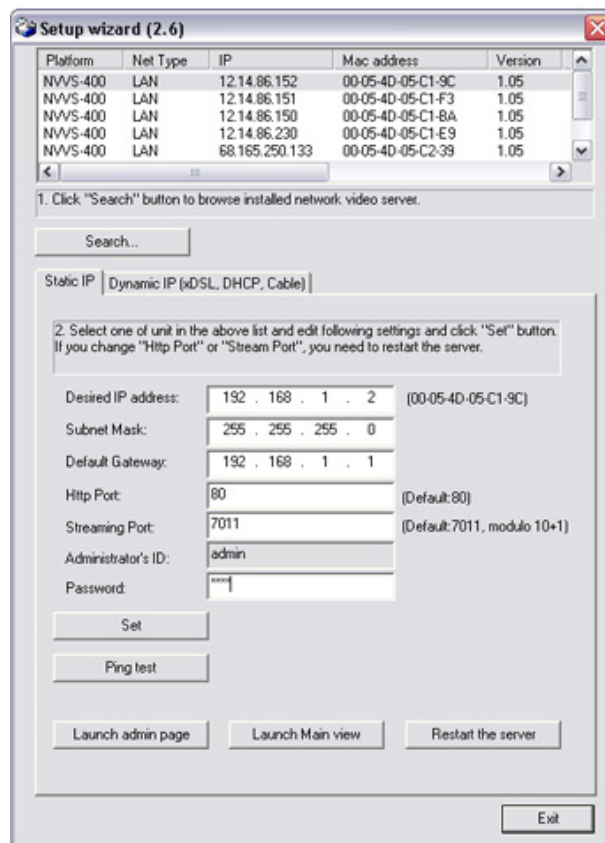
- Danger of explosion if battery is incorrectly replaced. Replace the battery only with the same type recommended by the manufacturer.

Dispose of used batteries according to the manufacturer's instructions.

>>> Quick Installation Guide (Static IP)



1. Connect 68A00-1 Network Digital Video Recorder to a PC using a crossover LAN cable. Copy the "IPSetup.exe" from accompanying CD onto the PC and run it.

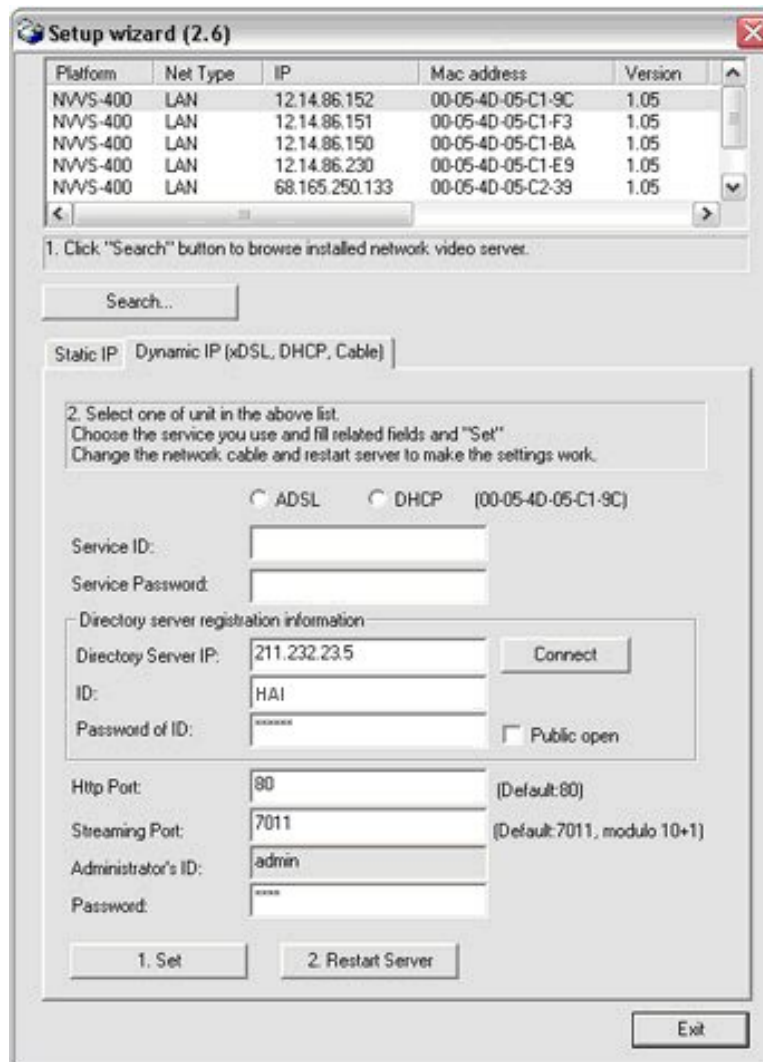


2. Click the "Search" button to detect 68A00-1 unit. Highlight it in the list and fill out the desired network settings. The initial administrator's password is set to "pass". Click the "Set" button to apply settings.

3. If you have a successful response through ping test, which will read “Network settings are updated successfully”, you’re ready to connect to the 68A00-1.
4. Click “Launch Main view” and view live images from connected cameras.
5. Place the 68A00-1 Network Digital Video Recorder at its final location and enjoy live monitoring from the 68A00-1 whenever and wherever network access is available.

>>> Quick Installation Guide (Dynamic IP)

1. Enter directory server IP, ID, and Password of the 68A00-1



2. Following the same method as the Static IP set up, run the IP Setup Wizard after connecting the 68A00-1 Network Digital Video Recorder to the PC.
3. After clicking the search button, select the device you wish to set up. Select the type of dynamic IP you will be using (ADSL or DHCP). Service name and password are not needed for DHCP.

4. After selecting Dynamic IP (ADSL or DHCP), enter the Service IP and Service Password, if desired. Next, enter the Directory server registration information that is granted by the ISP. The default administrator's password is "**pass**". When completed, press "Set".
5. When entering the streaming port, be aware that this is the starting port for the camera. 10 consecutive ports will need to be opened for the camera to operate properly. When choosing a group of ports to open, always use a starting port where the last digit is one (e.g. Ports 7011-7020, 7021-7030, 7031-7040 are valid groups of ports to open).
6. When complete, click the "Restart Server" button. During the time that the Network Digital Video Recorder is restarting, unplug the crossover cable and connect the 68A00-1 to the modem, router, or switch using a standard network patch cable.
7. Upon successfully configuration of the Dynamic IP connection, a "Ready" LED will be lit on the front panel of the 68A00-1.
8. At this stage, to connect to the 68A00-1, use the following connection method:

`http://Network IP Address or Domain Name/ID`

For example:

`http://www.homeauto.com/HAI`