

**ClickOn**  
2 Lever Remote Controlled  
Universal Dimmer



[www.clickon.co.za](http://www.clickon.co.za)

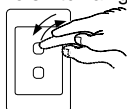
**CL-RUD-102**  
2 Lever Remote Controlled  
Universal Dimmer

- Compatible to all ClickOn remote controls.
- Remote on/off and dimming control of incandescent lamps, high voltage halogen lamps and low voltage halogen lamps with dimmable electronic transformers.
- Built-in radio receiver and power failure memory.
- No additional wiring required.
- Can be used without a remote control.
- Fits standard 2x4 wallbox.
- Overload protection.



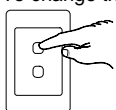
**OPERATING INSTRUCTIONS**

To switch a light ON or OFF



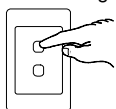
Press and Release the button. The LED indicator next to the button will flash once when the light is switched ON and twice when the light is switched OFF.

To change the light intensity



Press and hold the button until the light reaches the desired intensity.

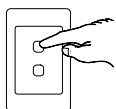
To RESTORE to a previous level of light intensity when the light is switched off



Press and hold the button. Release the button when the light turns on.

For operation with remote control, see applicable remote control manual.

**PROGRAMMING A REMOTE CONTROL DEVICE INTO THE LIGHT DIMMER**



Place the dimmer into the **programming mode** by pressing and holding the dimmer button until the light flashes and the LED indicator next to the button starts flashing constantly. **Release the button.**

**FOR A 64 CHANNEL REMOTE CONTROL:**



Select a channel of your choice on the remote control by pressing and releasing a channel key.



Press and hold the **ON** button on the remote control until the remote sounds **3 beeps** and the light flashes again (dimmer LED flashes rapidly).



Release the remote control button and press and release the dimmer button to exit the program mode.

**FOR A 16 CHANNEL REMOTE CONTROL:**



Select a channel of your choice on the remote control by pressing and releasing a channel key.



Press and hold the **UP** button on the 16 channel remote control until the remote sounds **3 beeps** and the light flashes again (dimmer LED flashes rapidly).



Release the remote control button and press and release the dimmer button to exit the program mode.

**FOR A 6 CHANNEL REMOTE CONTROL:**

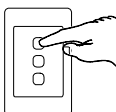


Press and hold the **desired channel button** on the 6 channel remote control until the remote sounds **3 beeps** and the light flashes again (dimmer LED flashes rapidly).



Release the remote control button and press and release the dimmer button to exit the program mode.

**FOR A WALLMOUNT REMOTE CONTROL:**



Press and hold the button on the wallmount remote control for 10 seconds. Check for a confirmation from the dimmer (dimmer LED flashes rapidly).



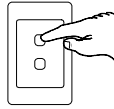
Release the wallmount remote control button and press and release the dimmer button to exit the program mode.

**NOTE:** The program mode on the dimmer will automatically time out after 30 seconds if no programming commands are received. On exiting the program mode, the light will dim to a 50% brightness level.

## DELETING REMOTE CONTROL CHANNELS FROM THE LIGHT DIMMER

The Light Dimmer can store up to 24 different remote control channels. If the dimmer fails to program any new channels, one or more of the existing channels need to be deleted.

Note: To delete a single remote control channel from the light dimmer, the original remote control device must be used. To delete all remote control channels from the light dimmer, any remote control can be used.



Place the dimmer into the **programming mode** by pressing and holding the dimmer button until the light flashes and the LED indicator next to the button starts flashing constantly. **Release the button.**

### FOR A 64 CHANNEL REMOTE CONTROL:



Select the channel to be deleted on the remote control.



Press and hold the **OFF** button on the remote control until the remote sounds **3 beeps** and the light flashes again (dimmer LED flashes rapidly).



Release the remote control button and press and release the dimmer button to exit the program mode.

### FOR A 16 CHANNEL REMOTE CONTROL:



Select the channel to be deleted on the remote control.



Press and hold the **DOWN** button on the remote control until the remote sounds **3 beeps** and the light flashes again (dimmer LED flashes rapidly).



Release the remote control button and press and release the dimmer button to exit the program mode.

### FOR A 6 CHANNEL REMOTE CONTROL:

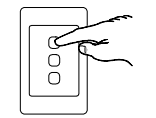


Press and hold the **desired channel button** on the 6 channel remote control until the remote sounds **3 beeps**. **Keep holding** the remote control button until the remote sounds **another 4 beeps** and the light flashes again (dimmer LED flashes rapidly).



Release the remote control button and press and release the dimmer button to exit the program mode.

### FOR A WALLMOUNT REMOTE CONTROL:



Press and hold the button on the wallmount remote control for 14 seconds. Check for a confirmation from the dimmer (dimmer LED flashes rapidly).



Release the wallmount remote control button and press and release the dimmer button to exit the program mode.

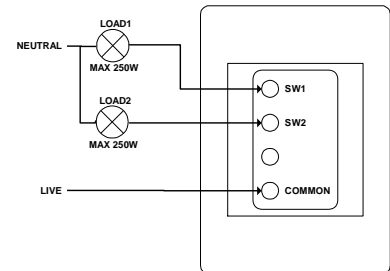
## DELETING ALL CHANNELS FROM THE DIMMER USING A 6, 16 OR 64 CHANNEL REMOTE:

Follow the steps for deleting a single channel but **keep holding the remote control button for another set of beeps**. Release the remote control button and press and release the dimmer button to exit the program mode.

### INSTALLATION

- Always switch off the supply at the main distribution box before installation.
- Connect live wire to COMMON.
- Connect return neutral from load 1 to SW1.
- Connect return neutral from load 2 to SW2.
- **For optimal remote control range, keep dimmers at least 500mm apart from one another.**

### WIRING DIAGRAM



### LED ERROR INDICATION

1 FLASH	<b>Overload</b> Causes the dimmer to automatically dim the light to a low intensity level.
2 FLASHES	<b>Short circuit</b> The dimmer will shut down immediately when a short circuit occurs.
3 FLASHES	<b>Incompatible load type or open circuit low voltage lamps on magnetic transformers</b> Causes the dimmer to shut down immediately.
4 FLASHES	<b>Insufficient load</b> Load smaller than 40W.

### SPECIFICATIONS

SUPPLY VOLTAGE	220-240V~ 50HZ
MINIMUM LOAD	40W @ 230V~ (per lever)
MAXIMUM LOAD	250W @ 230V~ (per lever)
AMBIENT TEMPERATURE	0 – 40 °C
INGRESS PROTECTION	IP20
MEMORY CAPACITY	24 Channels per lever

### WARRANTY

The Manufacturer warrants that the product identified in this manual is free from defects in material or workmanship. This warranty is valid for a period of 12 months from date of purchase. The manufacturer, at its discretion, will repair or replace the defective product when returned to the manufacturer via the retailer of the system. In the event that no satisfaction can be obtained from the retailer of the system, only then can the manufacturer be approached directly by the final purchaser. The manufacturer shall not be responsible for any loss or damage of any nature whatsoever whether direct or indirect, consequential or otherwise, sustained as a result of the use of the product. Improper use or mishandling of this product by the purchaser will render this warranty null and void. No warranty claims will be entertained without presentation of a valid invoice. The manufacturer will charge the purchaser for services rendered outside the warranty period. Any implied warranties in respect of this product are expressly excluded. No agreement whether implied or referred are binding, unless agreed to in writing by the manufacturer.

© 2008 ClickOn Technology (Pty) Ltd  
CL-RUD-102-R7 JAN 2008